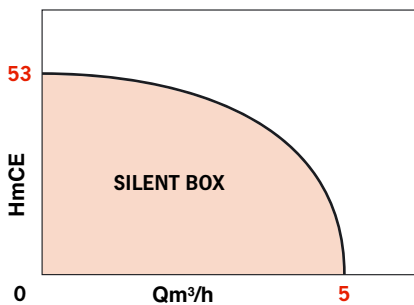


OPERATING RANGES

Flow rates up to :	5 m ³ /h
Pressure head up to :	53 mCE
Operating pressure :	8 bar
Max. water temperature :	+5°à 35°C
Max. ambient temperature :	40°C
Orifice ND :	1"
Max. suction head :	8 m

SILENT BOX

AUTOMATIC SELF-PRIMING MULTI-STAGE PUMP 50 Hz



APPLICATIONS

- Distribution of clear, pure water and rainwater
- Irrigation
- Sprinkling
- Distribution of drinking water
- Pressure boosting
- Washing



• SILENT BOX

SILENT BOX

ADVANTAGES

- 43 dB(A) low-level noise running
- Plastic shell
- All-in-one concept
- Built-in check valve
- On/off operation
- Dry running protection
- Adjustable starting pressure
- Draining pipe
- Simple connections
- The pump rests on silent blocks
- Built-in filling funnel

DESIGN

• Hydraulics :

- Self-priming horizontal pump
- Axial suction and upwards vertical discharge with threaded orifices
- Impellers mounted directly on the motor's extended shaft
- Hydraulic assembly assembled at 8 points to a lantern ring
- Shaft/motor leaktightness ensured through a mechanical seal

• Motor

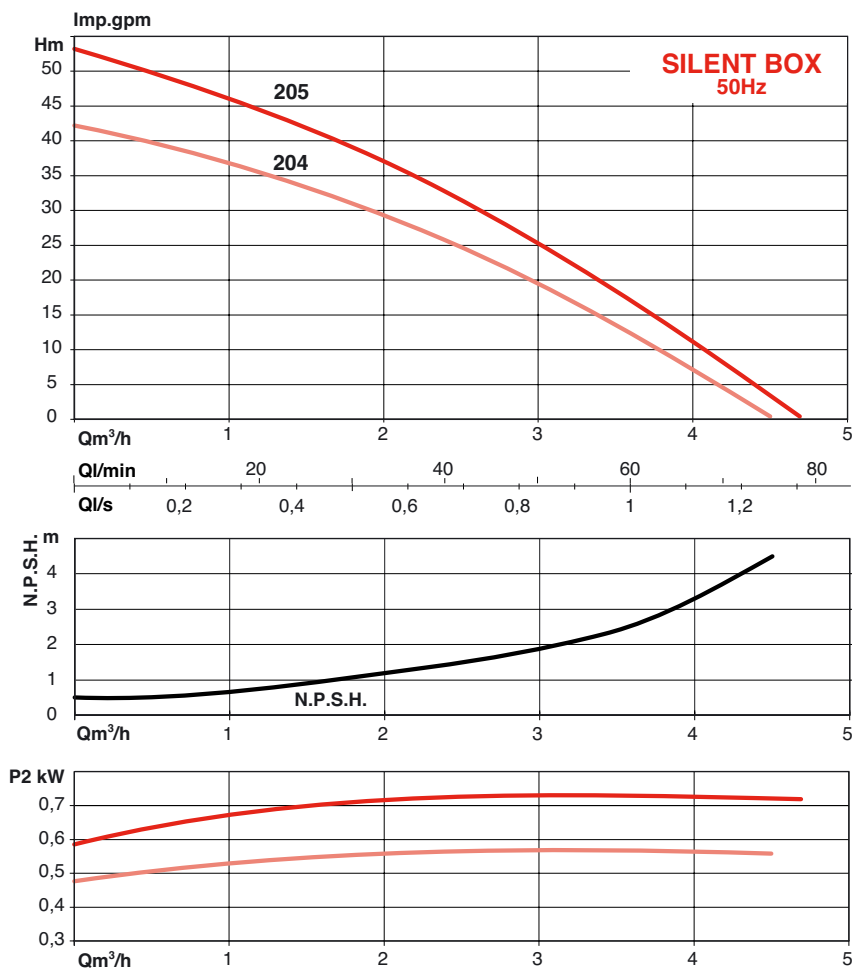
- Ventilated 2 pole dry motor
- Single-phase: thermal protection with automatic repriming

Speed :	2900 rev/min
Single-phase winding :	230 V
Frequency :	50hz
Insulation class :	F
Protection index :	IP 54
CE compliance :	NF E

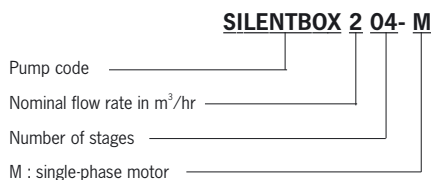
BASIC CONSTRUCTION

Main parts	Material
Impellers	Noryl
Stage body	Noryl
Mechanical seal	Carbon-resin/Nitrile
O-rings	NBR
Shaft	AISI 420
Knuckle	Noryl
Drain pipe	Transparent PVC
Pump body	AISI 304 stainless steel
Casing	Polypropylene
Acoustical foam	Polyurethane
Plugs	Noryl

HYDRAULICS PERFORMANCES

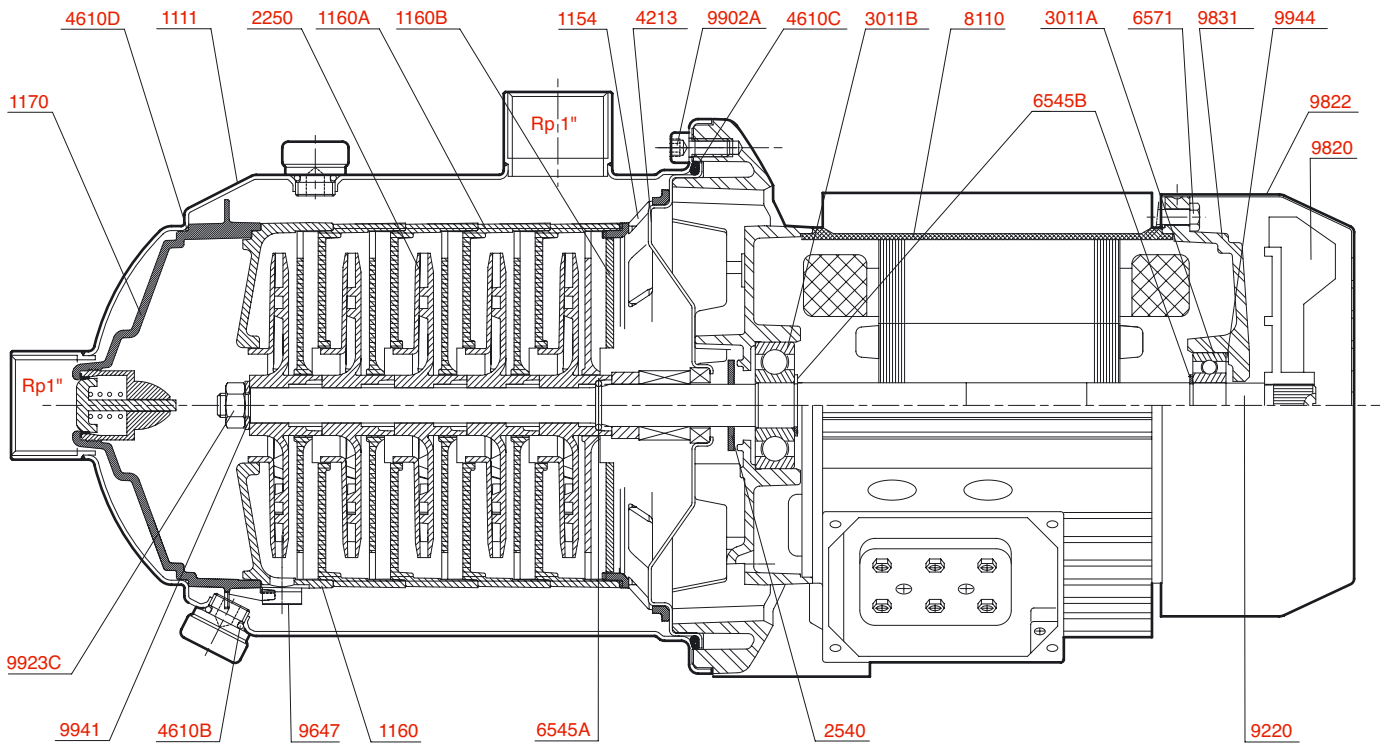


IDENTIFICATION



SILENT BOX

SECTIONAL DRAWING

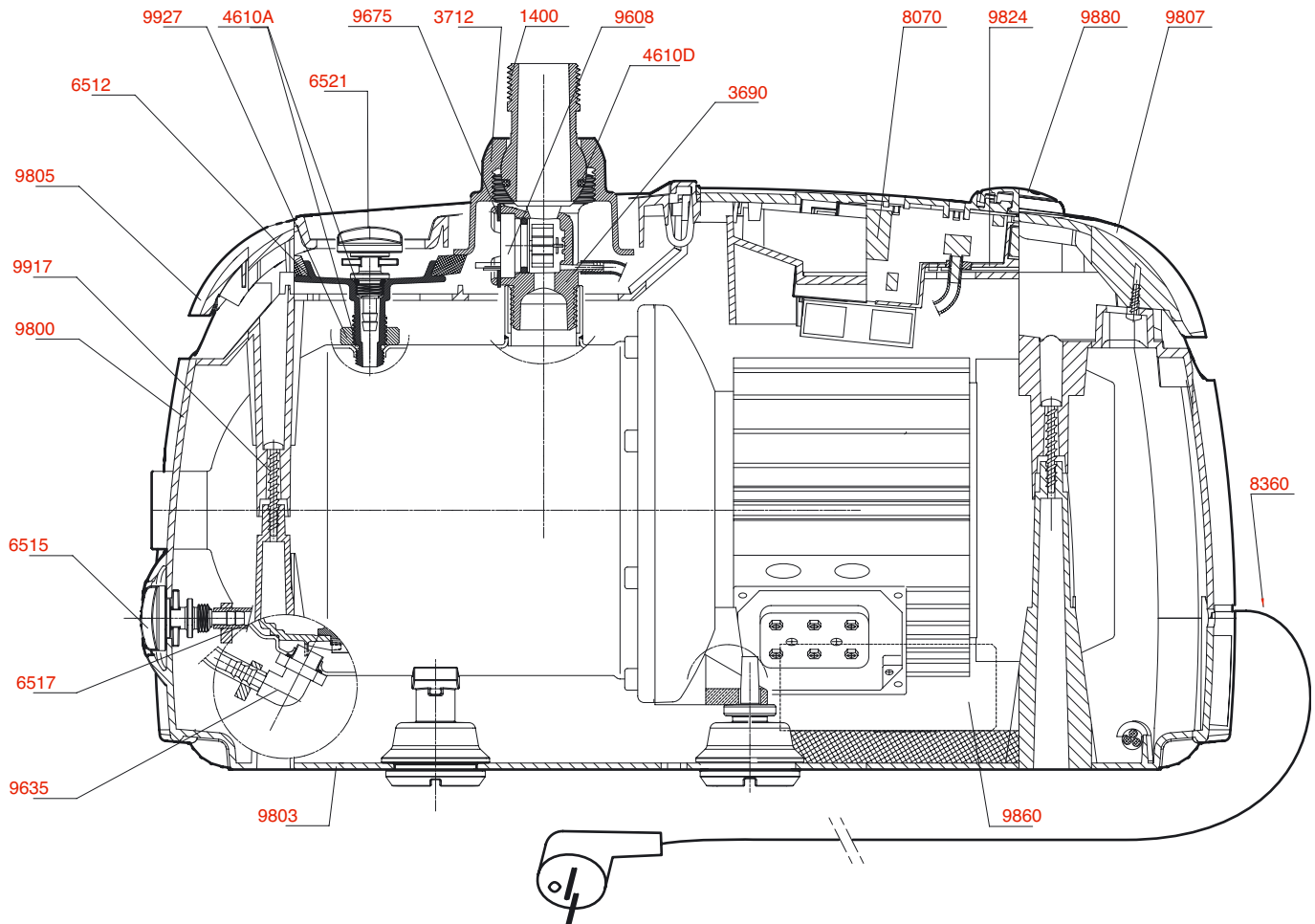


PARTS LIST

1111	6 STAGE CASING BODY	2540	RUBBER DEFLECTOR	9647	METAL VALVE
1160A	STAGE BODY with interstage crossover	4610B	SEAL	9820	MOTOR FAN
1154	DIFFUSER STAGE	4610C	O-RING	9822	FAN COVER
1170	CHECK VALVE STAGE	4610D	O-RING	9831	REAR BEARING FLANGE
1160	VALVE HOLDER STAGE	6545A	1/2 SNAP RING	4213	STEP HOLDER BOTTOM
1160B	INTERSTAGE CROSSOVER	6545B	RETAINING RING	9923C	NUT
2250	IMPELLERS	6571	TIE ROD	9941	WASHER
3011A	BEARING	8110	HOUSING	9944	ELASTIC WASHER
3011B	BEARING	9220	IMPELLER SHAFT	9902A	SCREW

SILENT BOX

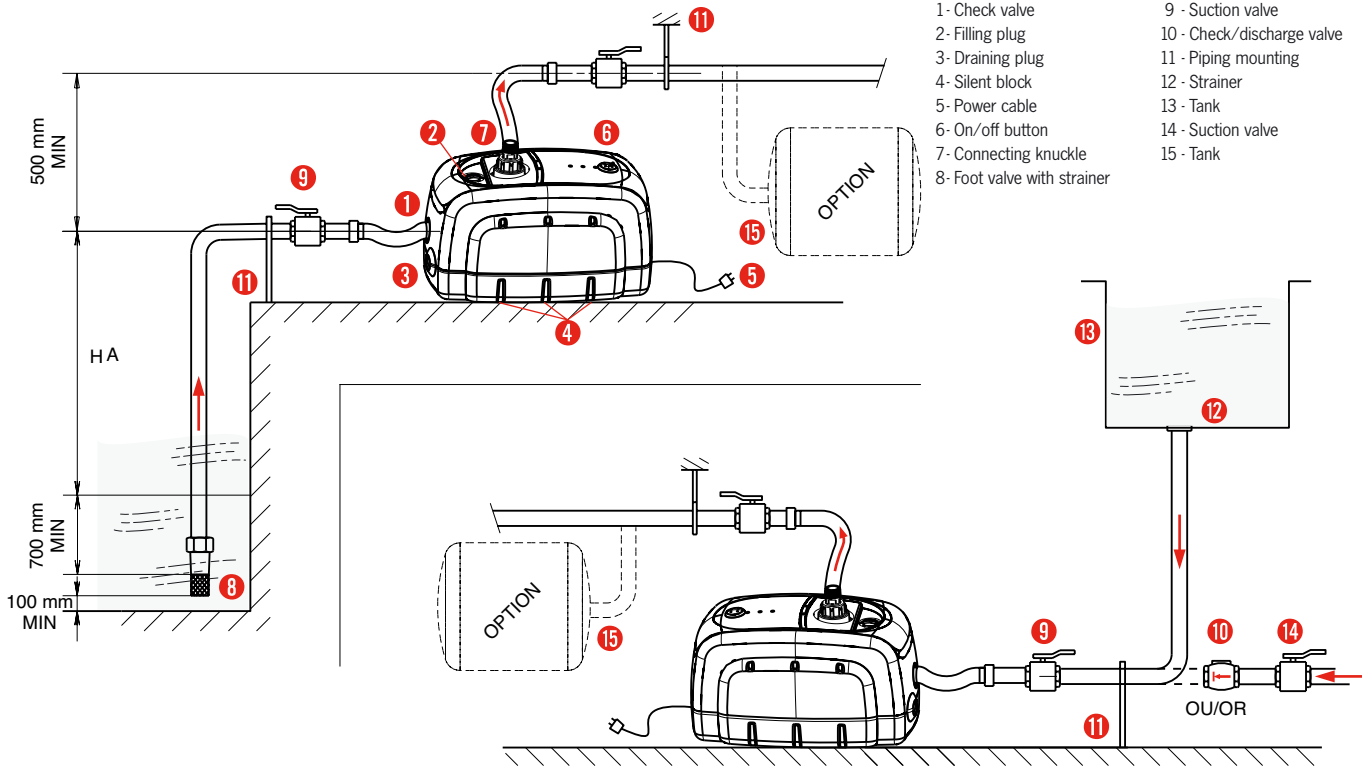
SECTIONAL DRAWING



PARTS LIST

3690	SENSOR MOUNTING	6521	FILLING PLUG	9803	BASE
3712	KNUCKLE NUT	9927	FINE THREAD NUT	9800	COVER
1400	DISCHARGE KNUCKLE	9635	DRAINING UNION	9917	SCREW
9608	FLOW RATE SENSOR	9675	FLOW RATE SENSOR	9805	HYDRAULIC TRAP
6515	DRAINING PLUG		RETAINING FORK	9807	CONTROL PANEL
4610D	O-RING	6517	FLEXIBLE PIPE	9880	PUSH BUTTON
4610A	O-RING	8360	WIRE HARNESS	8070	PRINTED CIRCUIT BOARD
6512	FILLING FUNNEL	9860	CAPACITOR	9824	PCB PROTECTOR HOOD

INSTALLATION DIAGRAMS



CHARACTERISTICS OF THE CONTROL PANEL AND THE AUTOMATIC DEVICE



1 ON/OFF BUTTON

2 OPERATING INDICATOR

3 VOYANT ATTENTE DE MARCHÉ

4 FAULT INDICATOR

5 STARTING PRESSURE ADJUSTING

Main functions*

Pressing the button for 2 seconds will automatically prime the pump. The button also allows the manual repriming of the pump in the event of a fault

The pump is in operation

The pump is connected to the mains electricity supply

The pump is in "alarm" mode : dry running protection

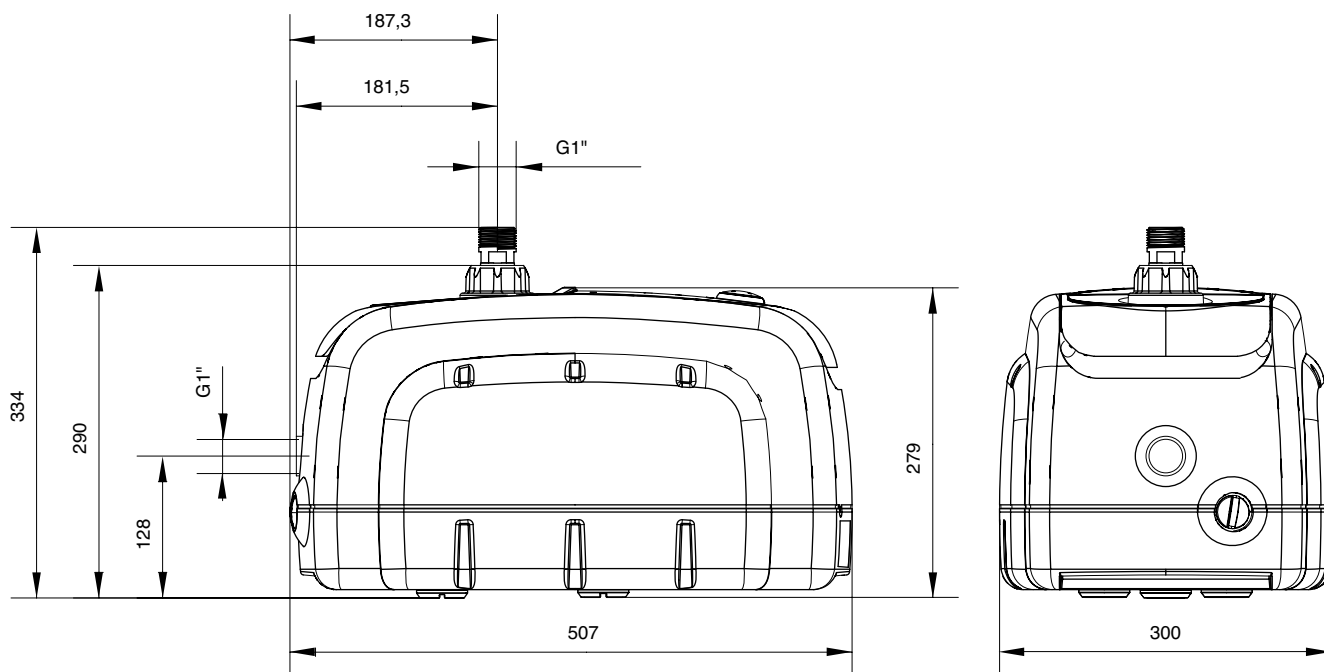
The pump is factory preset at 1.5 bar. The pressure can be adjusted from 0.7 bars to 3.5 bars (see photos)

* For more information about these functions, refer to the installation manual



SILENT BOX

ELECTRICAL AND DIMENSIONAL PROPERTIES



ORDER REFERENCE	P2 (kW)	I 1x 230 (A)	Capacitor μ F	Weight with packaging (kg)	Weight without packaging (kg)	Electric cable (m)
SILENT BOX204- M	0,55	4,2	12,5	12,2	11,2	1,5
SILENT BOX205- M	0,75	5,4	16	14,7	13,7	1,5

H07RNF cable with plug

ACCESSOIRES

- Suction kit
- Isolating valves
- Strainer
- Foot valve with strainer
- Bladder tanks

STARKIT

Suction kit with 7 m hose, foot valve/strainer, and two fittings (suction and discharge)



ORDER REFERENCE	ITEM PART NUMBER
STARKIT G1 (for SILENT BOX 204, 205)	4027874

CHARACTERISTICS

a) Electrical

- 230 V-50 hz single-phase (M) with built-in thermal protection and automatic repriming.
- Built-in capacitor.

b) Assembly

- Installation in a suction or charge fixed configuration.
- No need to secure to the ground.
- The silent blocks absorb the system's vibrations
- Connection through flexible pipes with reinforcing helix
- Strainer recommended
- Foot valve recommended for pump in a suction configuration

c) Packaging

- Delivered ready to use; prewired with plug

d) Maintenance

- Assembly/dismantling instructions delivered with the pump